



# Keewatin Patricia

DISTRICT SCHOOL BOARD



# 2011-12 Budget Estimates

June 14, 2011

# 2011-12 Budget Summary

- Total in-year revenue: \$84,733,346
- Total in-year expenses: \$86,888,688
- In-year deficit (PSAB): (\$2,155,342)
- In-year deficit (Compliance): (\$1,505,069)

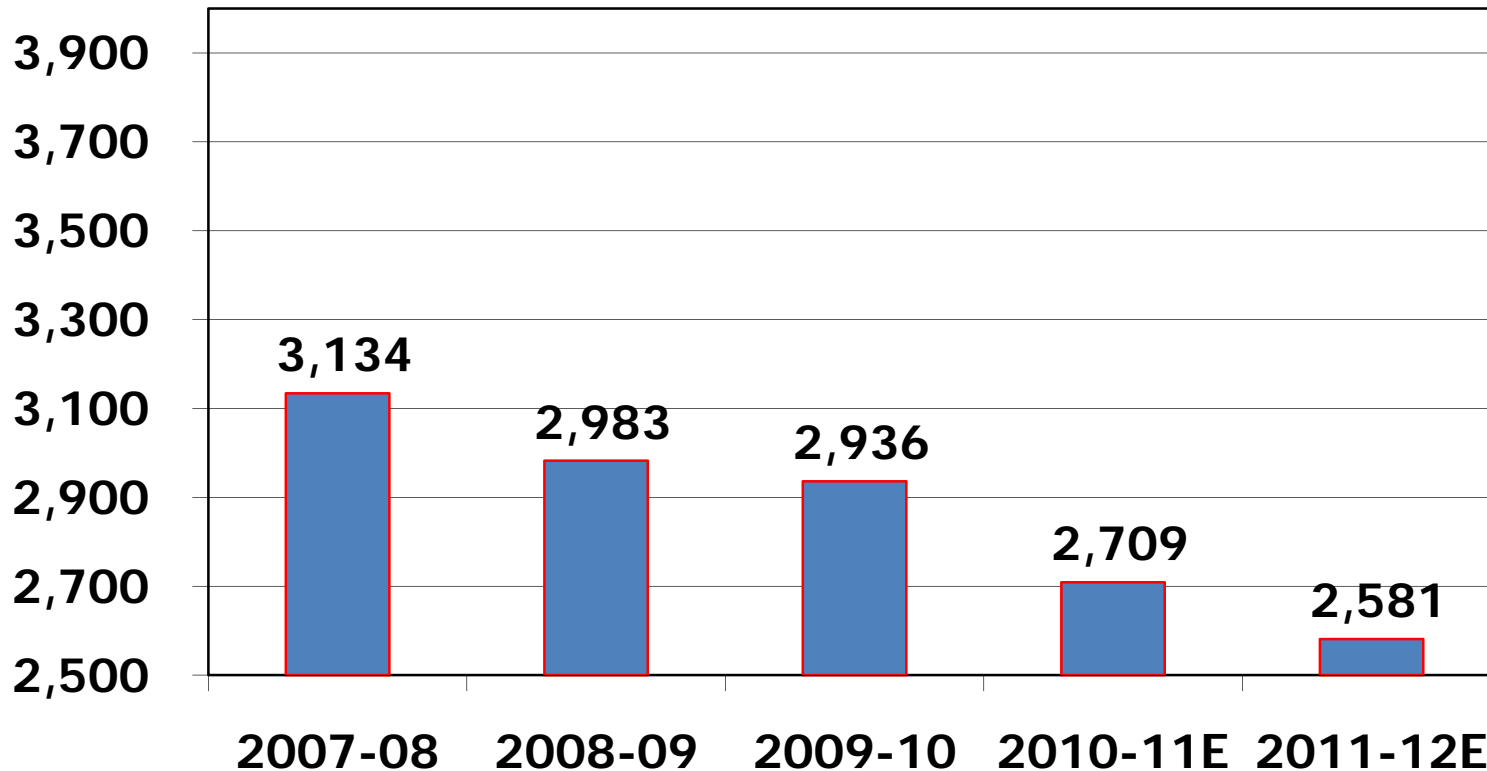
# Compliance Report

- In-year compliance deficit: (\$1,505,069)
  - Ministry approval for use of accumulated surplus to balance
- Special Education compliant (Exp > Grant)
- Governance and Administration compliant (Exp < Grant)
- Compliant re Primary Class Size (90% of primary classes at 20 or less; none > 23)

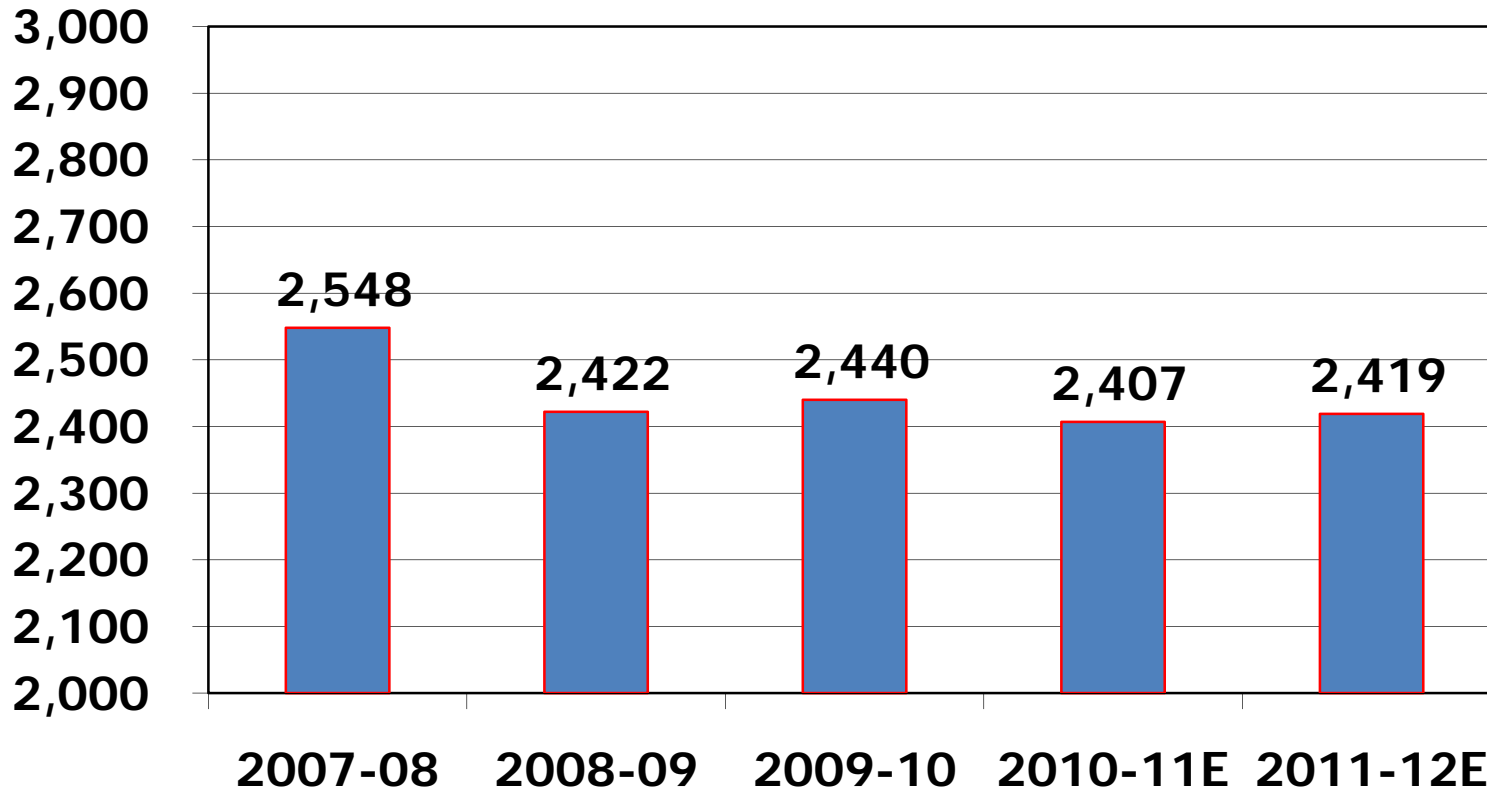
# Enrolment

<b>Pupils &lt;21 (ADE)</b>	<b>2009-10 Actual</b>	<b>2010-11 Rev. Ests</b>	<b>2011-12 Estimates</b>
Elementary	2936.10	2708.50	2581.00
Secondary	2439.76	2407.14	2418.50
Total	5375.86	5115.64	4999.50

# Enrolment - Elementary

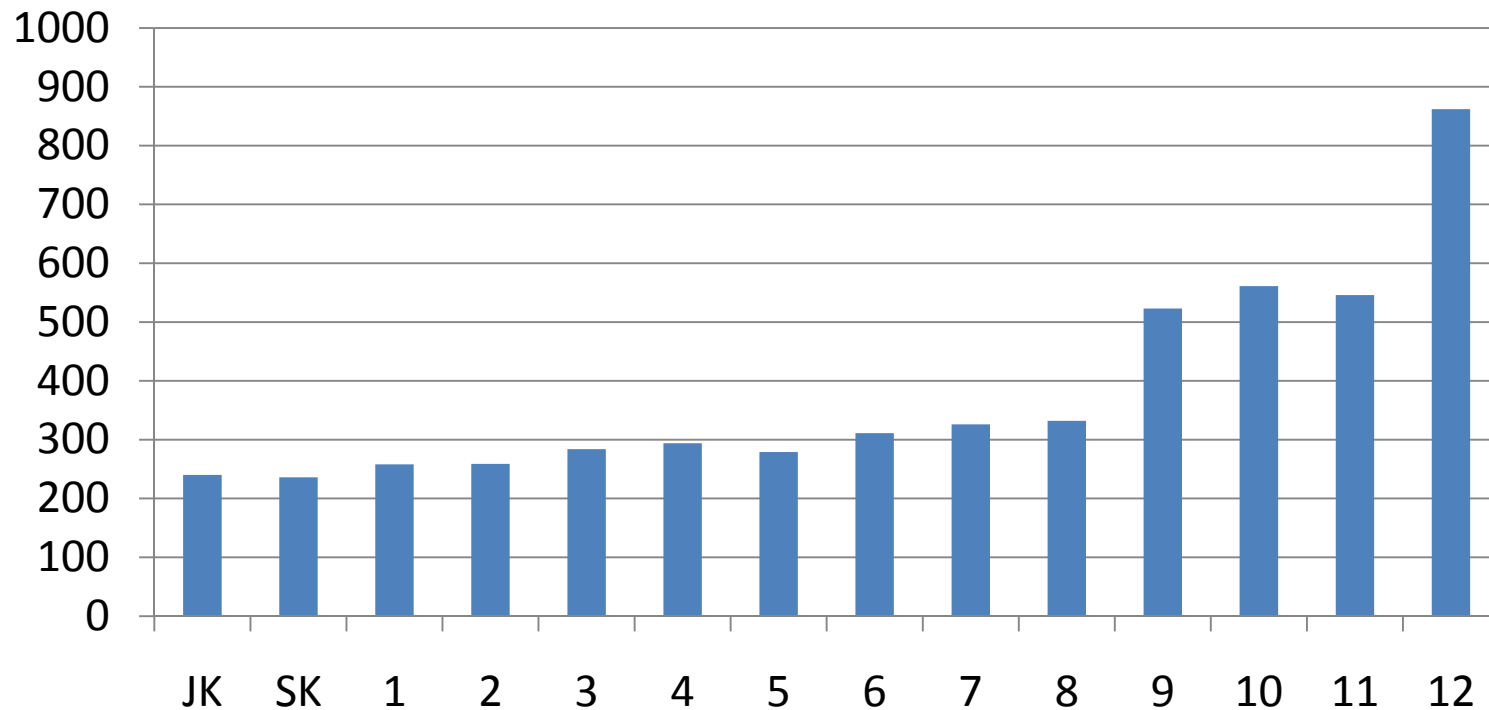


# Enrolment - Secondary



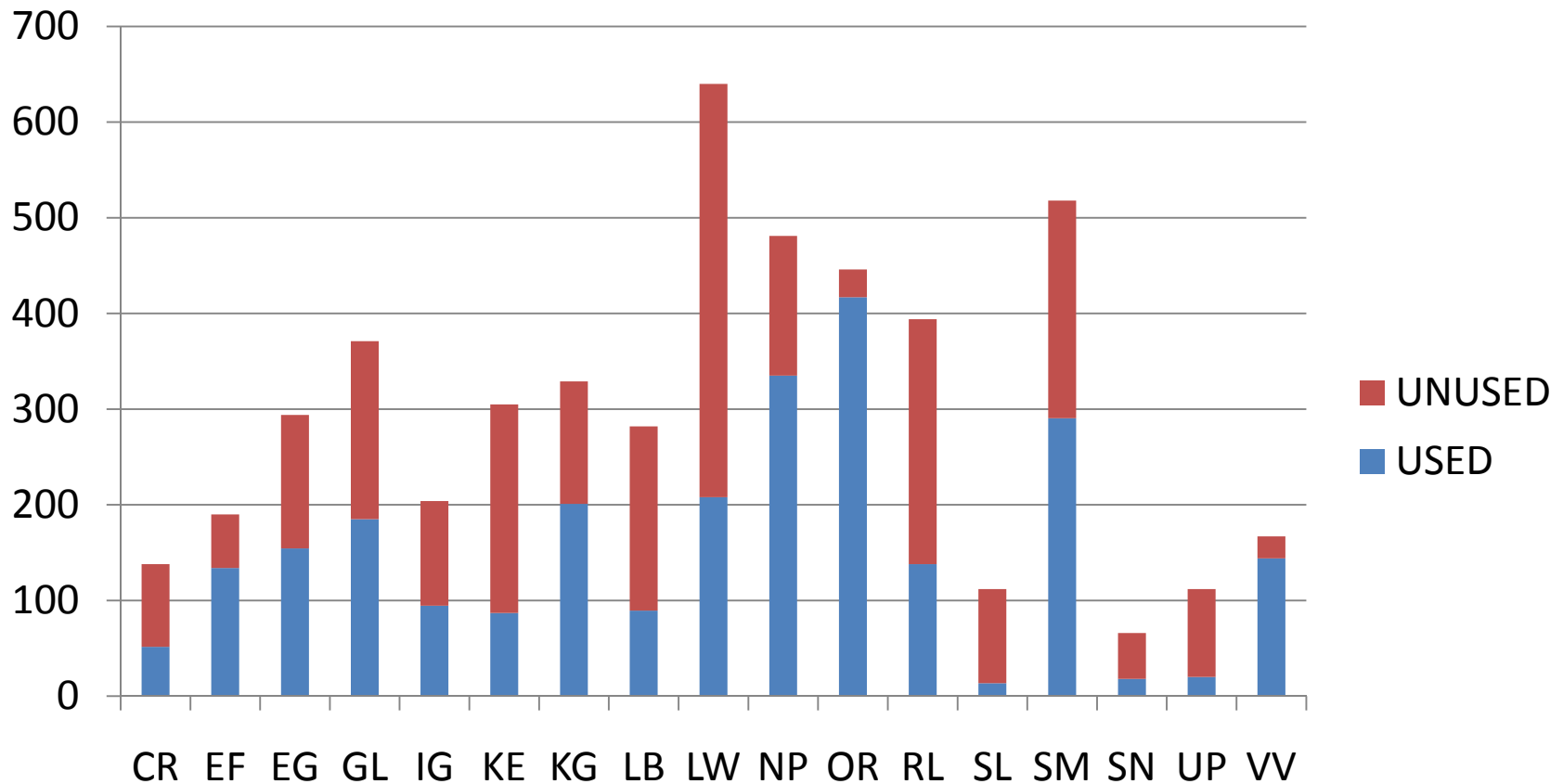
# Enrolment by Grade 2011-12

Headcount

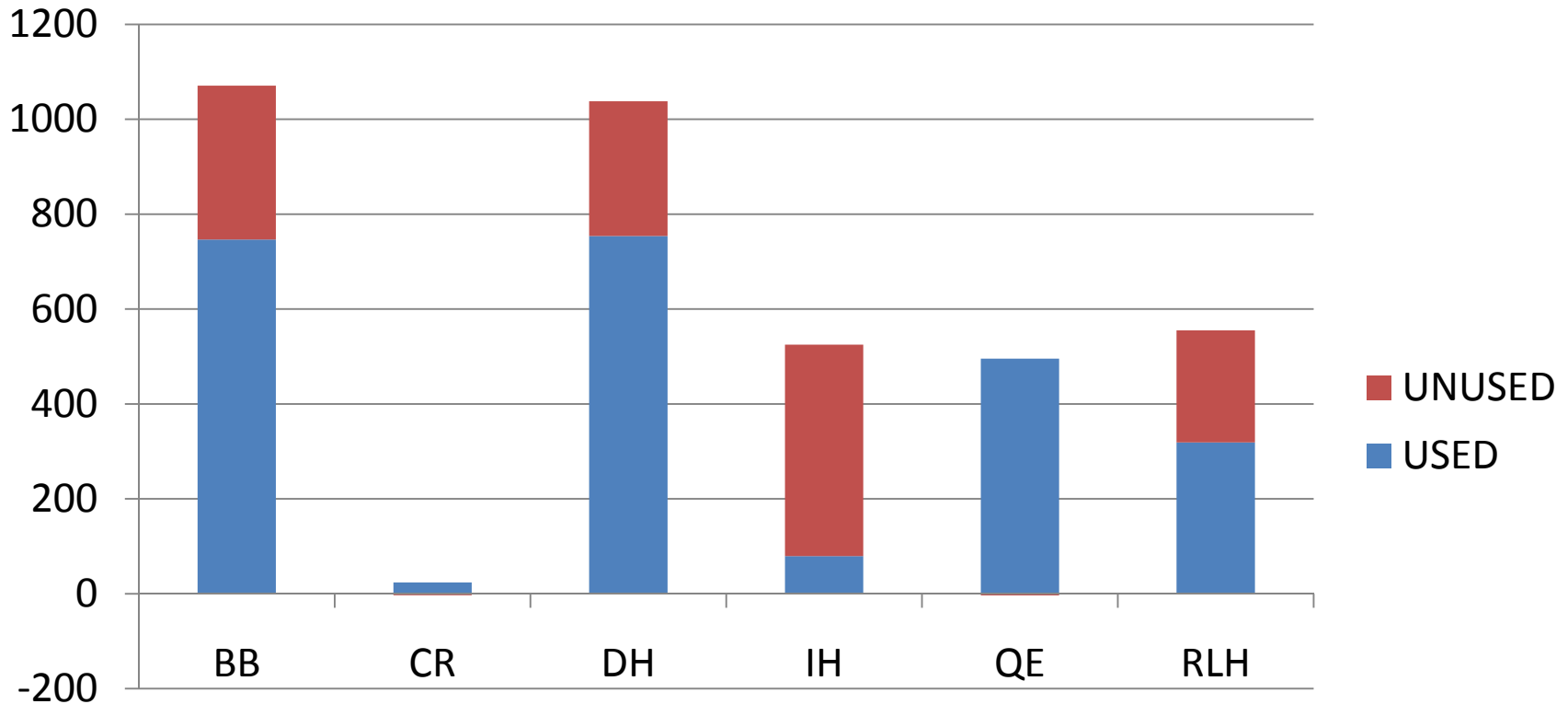




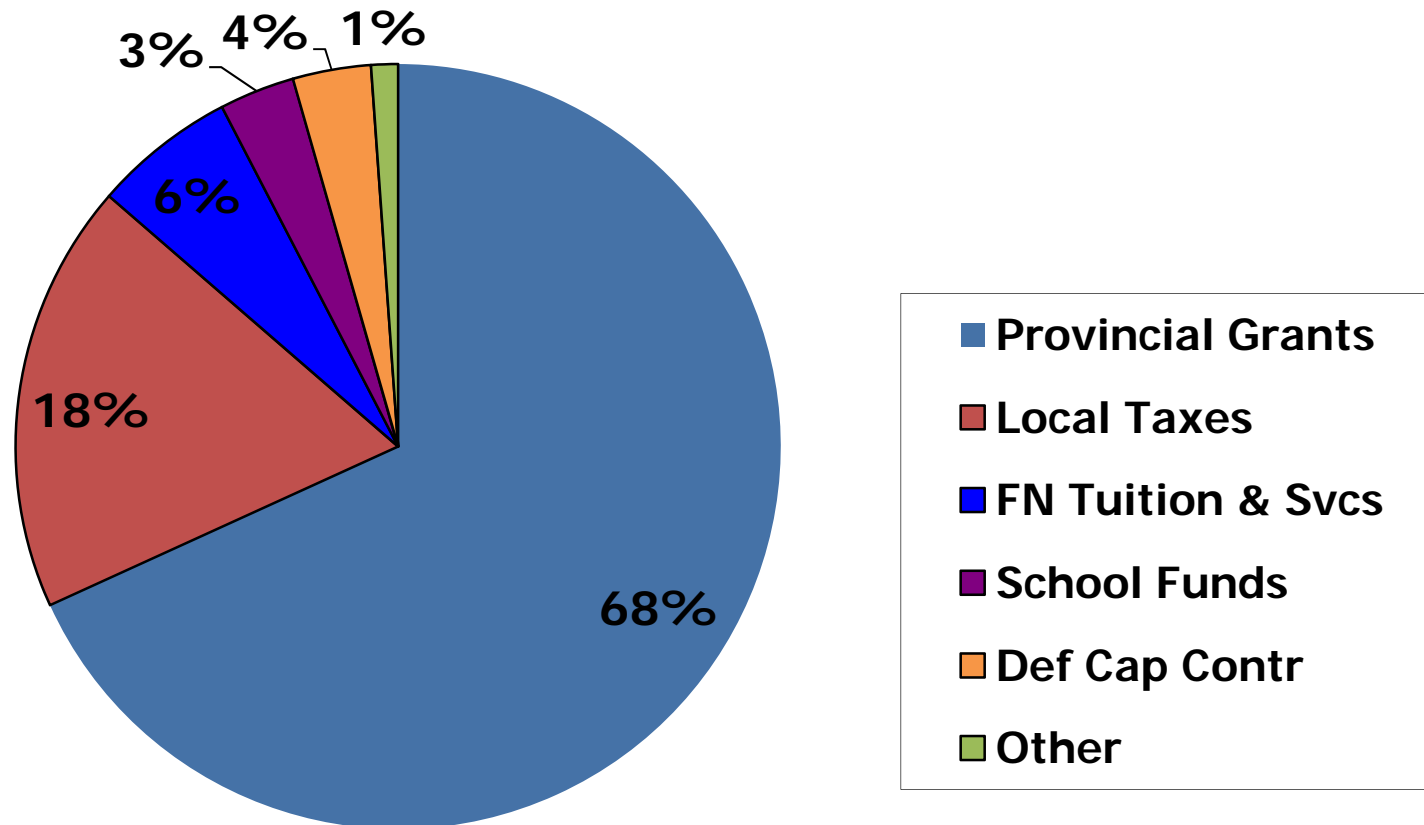
# Capacity Utilization - Elementary



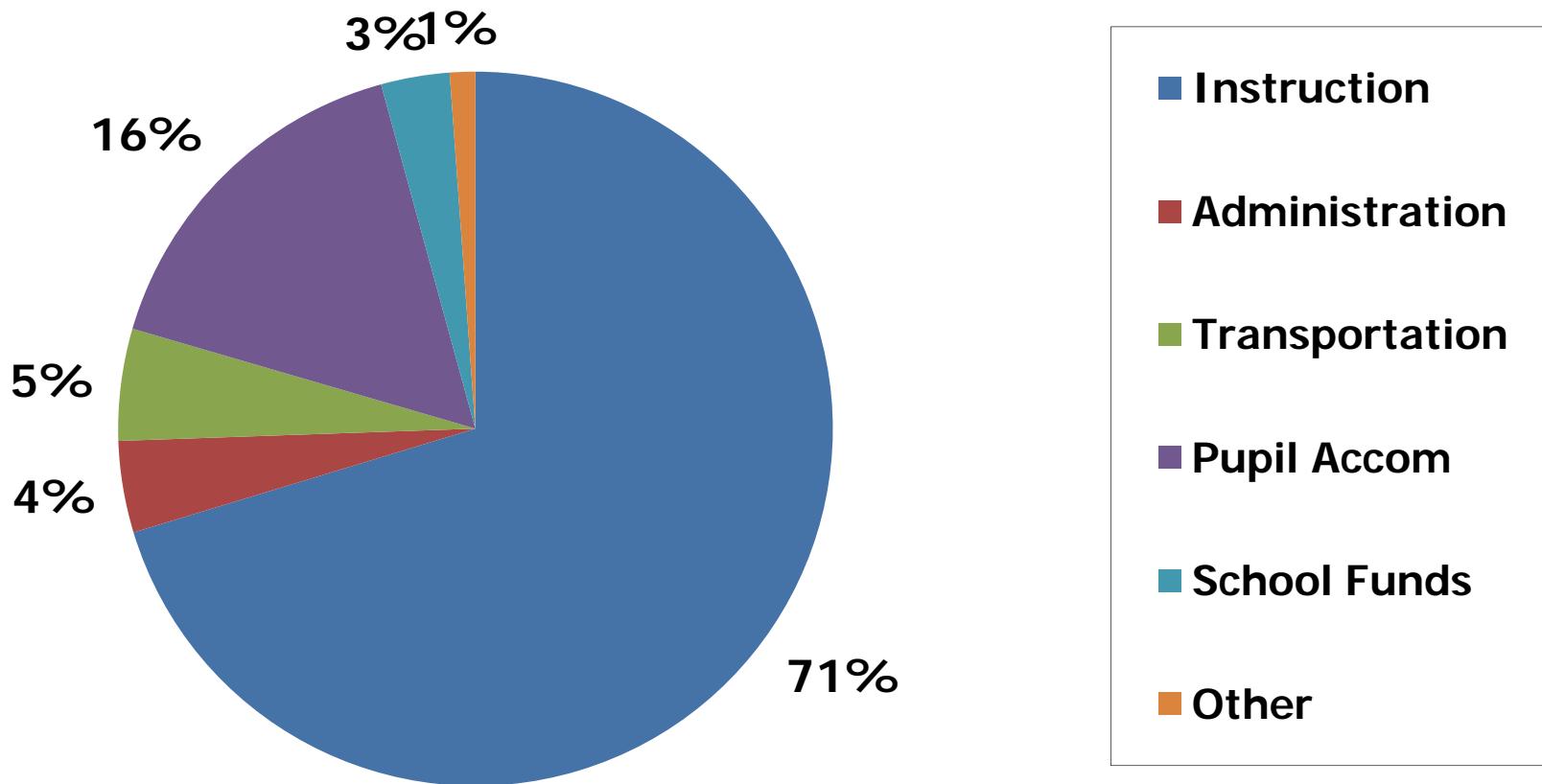
# Capacity Utilization - Secondary



# 2011-12 Revenues



# 2011-12 Expenses by Function



# 2011-12 Expenses by Object

Description	\$Million	%
Salaries & Benefits	64.2	73.9
Supplies, Services, Prof. Dev.	10.3	11.9
Amortization of Capital Assets	3.5	4.0
Interest Charges	2.3	2.6
Fees, Contracts, Rentals	5.8	6.7
Other	0.8	0.9
<b>Total</b>	<b>86.9</b>	<b>100.0</b>

# 2011-12 Capital Expenditures

Capital Project/Program	Expenditure (\$)
Demolition of Riverview PS	446,000
Acquisition of Portables	120,000
School Condition Improvement	1,067,814
Technology Project Equipment	987,000
Total Capital Expenditures	2,620,814

# Accumulated Surplus \$000s

	Open	Chg	Close
Un-appropriated	4,357	(718)	3,639
Internally appropriated	13,161	(787)	12,374
Sub-total available for compliance	17,518	(1,505)	16,013
Unavailable for compliance	(10,714)	(650)	(11,364)
<b>Total Accumulated Surplus</b>	<b>6,804</b>	<b>(2,155)</b>	<b>4,649</b>