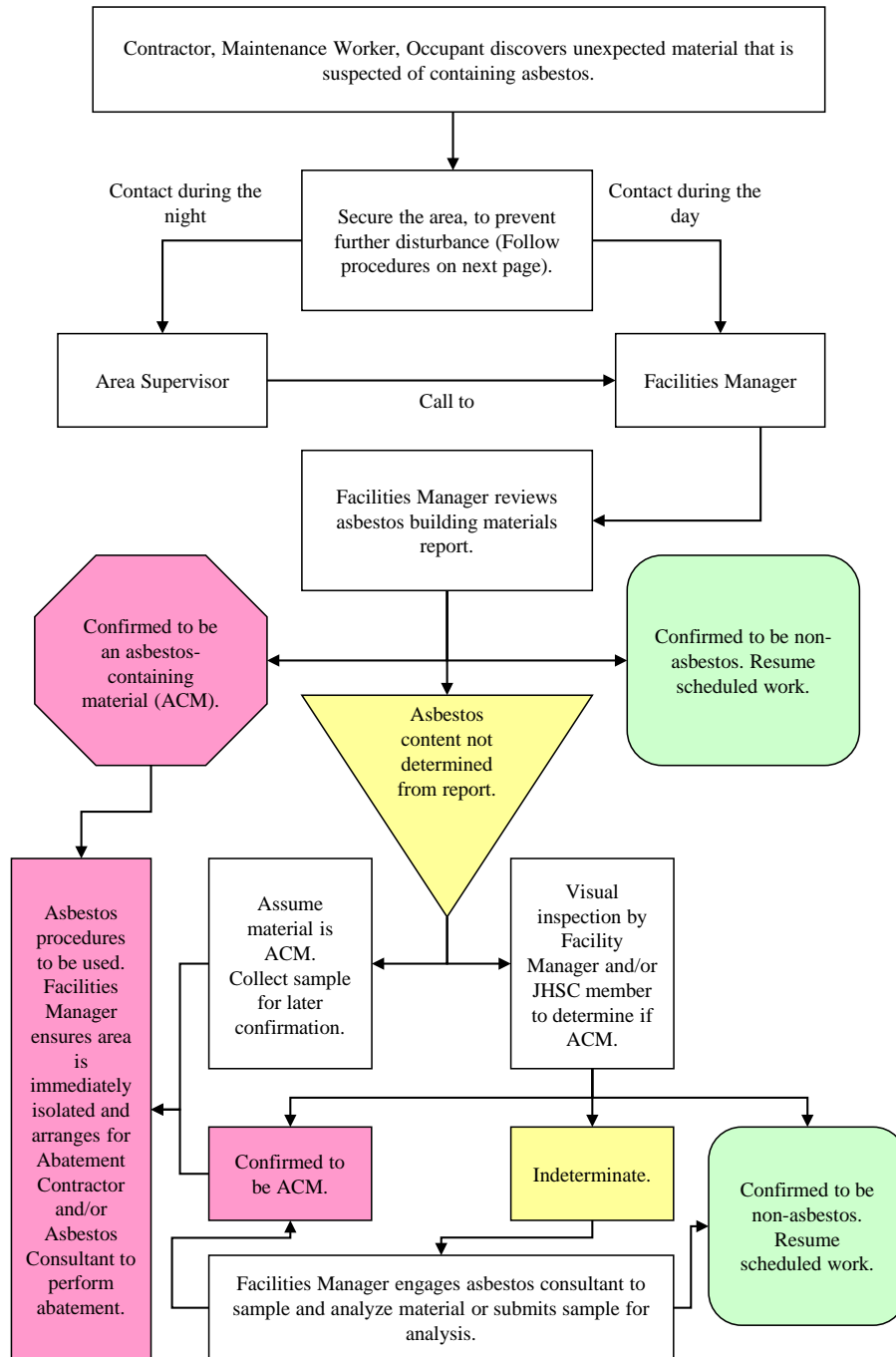


APPENDIX C

EMERGENCY REACTION IN THE EVENT OF SUSPECTED ASBESTOS SPILL

EMERGENCY RESPONSES AND NOTIFICATION IN THE EVENT OF ASBESTOS-SUSPECT MATERIAL DISCOVERED DURING MAINTENANCE OR CONTRACTED WORK OR REPORTED BY OCCUPANT



## EMERGENCY REACTION IN THE EVENT OF SUSPECTED ASBESTOS SPILL

If ACMs or suspect materials have been disturbed improperly, follow these directions:

Do not clean up, cover, move or contact asbestos-containing or suspect material. Cease work in the area and do not resume work that risks disturbing the suspect material. Workers are to leave the area and the KPDSB Facilities Manager and KPDSB Project Manager is to be notified immediately.

Isolate the area by locking doors if this can be done without blocking emergency or fire routes.

If it is not possible to safely isolate the area, the Facilities Manager will notify appropriate persons not to enter the area. If possible, post security to prevent unnecessary access.

The Facilities Manager will arrange to shut down ventilation systems to the affected area including supply, return and exhaust.

The Facilities Manager will determine if asbestos is contained in the debris. If material cannot be confirmed asbestos-free by records or appearance, follow procedures below.

The Facilities Manager will contact an Asbestos Consultant to sample or identify testing of suspect material or to identify the material. The following are cellular phone contact numbers for Pinchin Environmental Ltd. Hazardous Materials Group Staff for various regions:

- Dale Wiebe, Branch Manager, Kenora Office (807) 466-2979
- Jeff Lainsbury, Operation Manager, Mississauga Office (416) 816-2259
- Jay Inman, Senior Project Manager, Mississauga Office (416) 704-0706
- Rob Wagner, Office Manager, Hamilton Office (905) 520-4388
- John Tufts, Senior Project Manager, Ottawa Office (613) 355-3725
- David Kendall, Project Manager, Ottawa Office (613) 866-8005
- Mike Harrett, Office Manager, Kingston (613) 484-3370
- Graham Manning, Office Manager, Sarnia/Comber (519) 365-5210
- Pinchin Emergency Pager Number (416) 375-5523
- At their option, the Facilities Manager may decide to employ an Asbestos Consultant to perform air monitoring and consulting, prior to and/or after clean-up to determine if building personnel were exposed to airborne asbestos and to ensure airborne fibre levels are within acceptable limits to re-occupy the space. The Facilities Manager must notify the Joint Occupational Health and Safety Committee of the results of air monitoring or testing.

If the material is confirmed or assumed to contain asbestos, the Facilities Manager is to contract an Asbestos Abatement Contractor to clean-up contaminated area using Type 2 Emergency Procedures in Appendix of this document.

If KPDSB personnel are to clean up the area, workers performing repair or clean up of ACM shall follow Type 3 Emergency Clean UP Procedures in Appendix D and F of this document.

Enable ventilation systems after air monitoring or clean up of ACM.