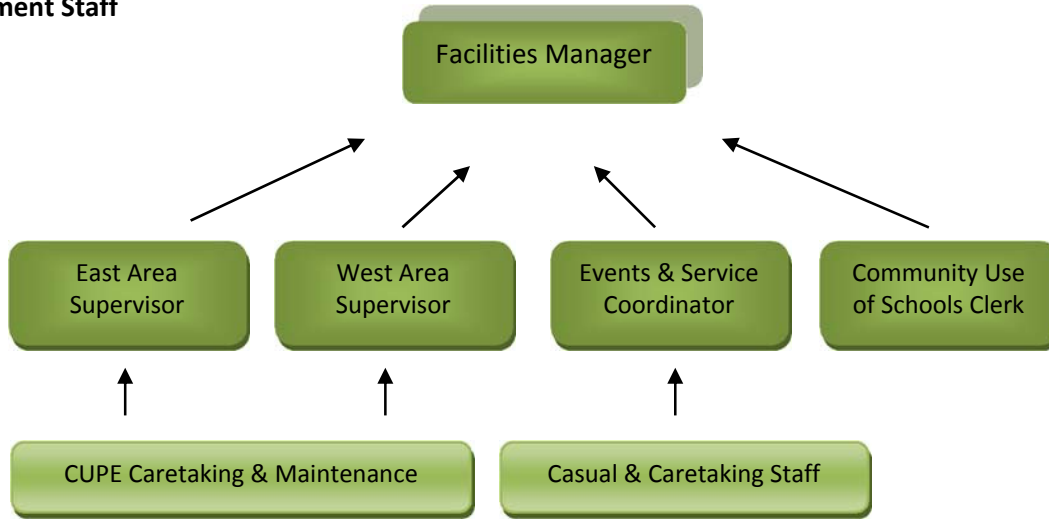


## Department Staff



Facilities CUPE Staffing 2014-2015			
Caretaking	Maintenance	Facility	Size
FTE	FTE		(sq. ft.)

Elementary	0.500	0.300	Crolancia	11,172
	1.000	0.200	Ear Falls	19,377
	1.500	0.500	Evergreen	30,750
	2.000	0.400	Golden Learning Centre	35,653
	1.600	0.200	Ignace School	30,497
	1.500	0.250	Keewatin	22,245
	1.500	0.500	King George	30,628
		1.000	Lakewood	
	1.625	0.500	Lillian Berg	29,275
	2.500	0.750	New Prospect	42,196
	2.000	0.400	Red Lake Madsen	35,035
	2.500	1.000	Open Roads	44,183
	0.375	0.250	Savant Lake	7,480
	2.750	0.500	Sioux Mountain	47,458
	0.375	0.250	Sioux Narrows	5,200
	0.500	0.500	Upsala	20,000
	1.500	0.500	Valleyview (+ 4 single portable)	22,400
	<b>23.725</b>	<b>8.00</b>	<b>Total Elementary</b>	<b>433,549</b>

<b>Facilities CUPE Staffing</b>			
<b>Caretaking</b>	<b>Maintenance</b>	<b>Facility</b>	<b>Size</b>
<b>FTE</b>	<b>FTE</b>		<b>(sq. ft.)</b>

<b>Secondary</b>	6.500	1.000	Beaver Brae High (+ Annex)	131,482
	0.500	0.200	Crolancia	16,758
	7.000	1.000	Dryden High School	158,978
	2.400	0.300	Ignace School	45,746
	3.250	1.000	Q.E. (1 triple + 3 single portables)	72,483
	4.000	1.000	Red Lake High School	77,300
	<b>23.650</b>	<b>4.500</b>	<b>Total Secondary</b>	<b>502,747</b>

<b>Other</b>		1.000	East Area Electrician	
		1.000	West Area Electrician	
	1.000	0.250	Dryden Training Centre	32,499
		0.250	Sioux Lookout Access Centre	10,852
			Savant Lake - 3 teacherages	3,000
			Pickle Lake - 9 teacherages	9,000
			Upsala - 2 teacherages	2,000
<b>1.000</b>	<b>2.500</b>	<b>Total Other</b>	<b>57,351</b>	

<b>48.375</b>	<b>15.00</b>		<b>993,647</b>
<b>Total FTE</b>			
<b>63.38</b>			